

ANNUAL VTAAC MEETING

Ruth Heimann MD PhD
Vermont Cancer Center
Fletcher Allen Health Care

VTAAC

- Was created in 2005 with THE MISSION of reducing the burden of cancer on Vermonters
- It is a broad based volunteer coalition of cancer survivors, advocates, public health and health care professionals.
- VTAAC is every Vermonters organization and we welcome and encourage participation from everybody.

VTAAC


- Collaborative effort with VDH to achieve the goals of:

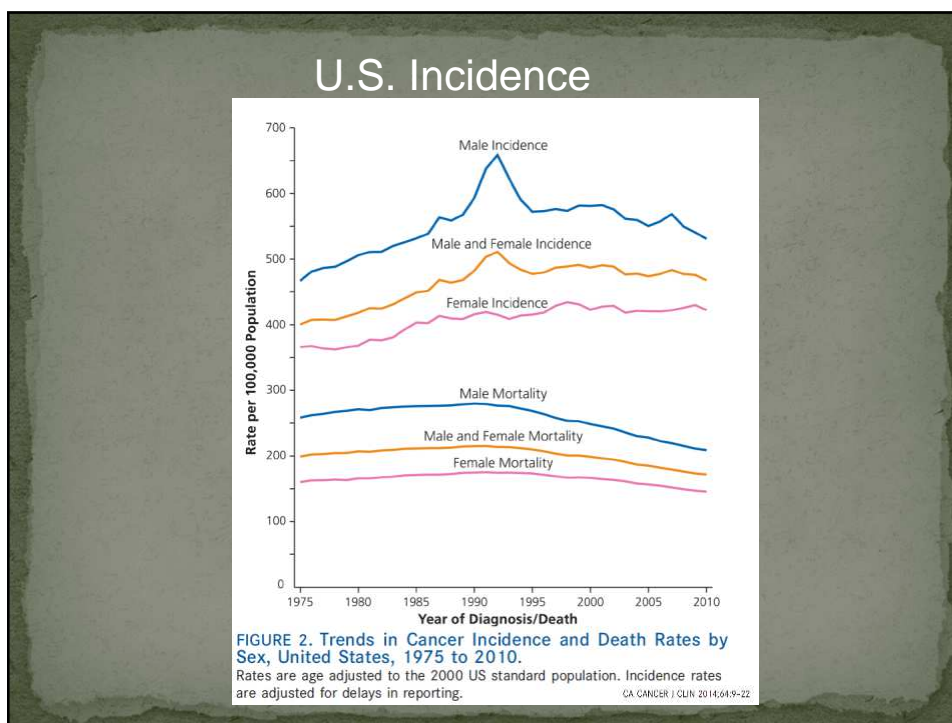
INCREASING ACCESS AND AWARENESS ABOUT THE CHALLENGES THE DISEASE POSES IN ITS ENTIRE CONTINUUM

PREVENTION ---EARLY DETECTION---
ACCESS TO CARE---QUALITY OF CARE---
SURVIVORSHIP---
PALLIATION

- Cancer is a major health and emotional burden.
- It is a complex constellation of numerous diseases, complex biologically and emotionally

Estimated New Cases*

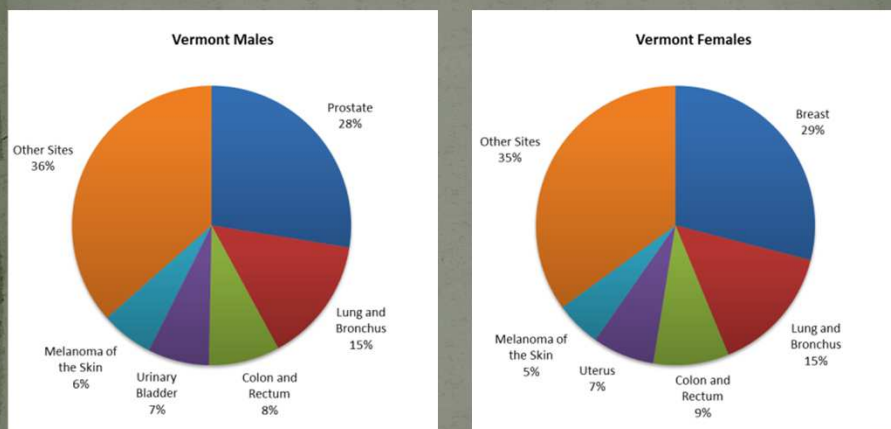
		Males	Females			
Prostate	233,000	27%		Breast	232,670	29%
Lung & bronchus	116,000	14%		Lung & bronchus	108,210	13%
Colorectum	71,830	8%		Colorectum	65,000	8%
Urinary bladder	56,390	7%		Uterine corpus	52,630	6%
Melanoma of the skin	43,890	5%		Thyroid	47,790	6%
Kidney & renal pelvis	39,140	5%		Non-Hodgkin lymphoma	32,530	4%
Non-Hodgkin lymphoma	38,270	4%		Melanoma of the skin	32,210	4%
Oral cavity & pharynx	30,220	4%		Kidney & renal pelvis	24,780	3%
Leukemia	30,100	4%		Pancreas	22,890	3%
Liver & intrahepatic bile duct	24,600	3%		Leukemia	22,280	3%
All Sites	855,220	100%	All Sites	810,320	100%	



Cancer Epidemiology-Vermont

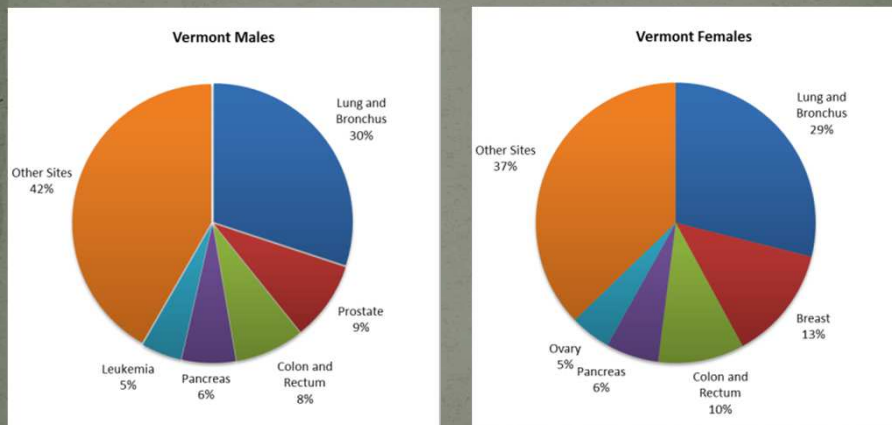
- Cancer is a major health issue Vermonters.
 - 3600 new cases per year
 - 1200 death per year
 - Medical and emotional challenges
- Approximately 36,000 (6%) of Vermont adults are living with a current or previous diagnosis of cancer
- Approximately 65% of cancer survivors are expected to live at least 5 years after diagnosis.
- A large percentage of people are cured
- Cancer as a chronic disease

Vermont Cancer Incidence, Top Five Sites 2006-2010



Source: Vermont Cancer Registry, 2006-2010

Vermont Cancer Mortality, Top Five Sites 2006-2010



Source: Vermont Cancer Registry, 2006-2010

INCIDENCE



Age Adjusted Cancer Incidence Rates, 2006-2010 per 100,000 population by site and gender

Male and Female				Male				Female			
Cancer Site	U.S. Rate (All Races)	VT Rate (All Races)	VT Cases (per year)	Cancer Site	U.S. Rate (All Races)	VT Rate (All Races)	VT Cases (per year)	Cancer Site	U.S. Rate (All Races)	VT Rate (All Races)	VT Cases (per year)
All Sites	471.2	492.9 ▲	3,612	All Sites	543.2	545.8	1,839	All Sites	419.6	454.6 ▲	1,773
Lung and Bronchus	60.0	72.6 ▲	530	Prostate	159.9	141.9 ▼	506	Breast	127.6	131.5	514
Colon and Rectum	44.3	41.9	306	Lung and Bronchus	71.2	81.9 ▲	267	Lung and Bronchus	51.8	65.8 ▲	263
Melanoma of the Skin	22.7	28.7 ▲	205	Colon and Rectum	50.5	45.2 ▼	151	Colon and Rectum	39.2	38.3	155
Urinary Bladder	21.3	24.9 ▲	181	Urinary Bladder	37.7	41.2	131	Uterus	26.1	31.4 ▲	128
Non-Hodgkin Lymphoma	20.7	20.6	148	Melanoma of the Skin	28.7	33.6 ▲	112	Melanoma of the Skin	18.5	25.4 ▲	94
Kidney	15.1	15.6	115	Non-Hodgkin Lymphoma	25.4	24.2	80	Thyroid	19.4	19.7	65
Leukemia	13.3	13.1	91	Kidney	20.7	21.2	72	Non-Hodgkin Lymphoma	17.0	17.8	66
Thyroid	13.0	13.0	86	Oral Cavity/Throat	16.1	17.7	65	Urinary Bladder	9.1	12.2 ▲	50
Pancreas	12.6	12.6	92	Leukemia	17.2	17.2	54	Ovary	12.8	12.1	47
Oral Cavity/Throat	10.9	11.9	92	Pancreas	14.3	14.2	48	Pancreas	11.3	11.0	45
Brain/Nervous System	6.6	8.1 ▲	57	Esophagus	7.9	10.3 ▲	35	Kidney	10.5	10.7	43
Liver	7.6	5.9 ▼	44	Liver	11.8	9.7 ▼	34	Leukemia	10.3	10.1	38
Esophagus	4.6	5.8 ▲	44	Brain/Nervous System	7.7	9.2	31	Brain/Nervous System	5.5	7.1 ▲	26
Myeloma	6.1	5.3	39	Larynx	6.8	6.8	24	Oral Cavity/Throat	6.3	6.6	26
Larynx	3.2	4.1 ▲	31	Myeloma	7.7	6.8	23	Cervix Uteri	6.8	4.6 ▼	16
Stomach	7.3	4.0 ▼	29	Testis	5.9	6.6	19	Myeloma	4.9	4.0	16
Hodgkin Lymphoma	3.0	3.6	22	Thyroid	6.4	6.2	20	Hodgkin Lymphoma	2.6	2.9	9
				Stomach	10.2	5.7 ▼	18	Stomach	5.0	2.8 ▼	11
				Hodgkin Lymphoma	3.4	4.3	13	Liver	4.0	2.7 ▼	10
								Esophagus	1.9	2.2	9
								Larynx	1.2	1.8	7

▲ Statistically higher than the U.S. SEER rate.
▼ Statistically lower than the U.S. SEER rate.

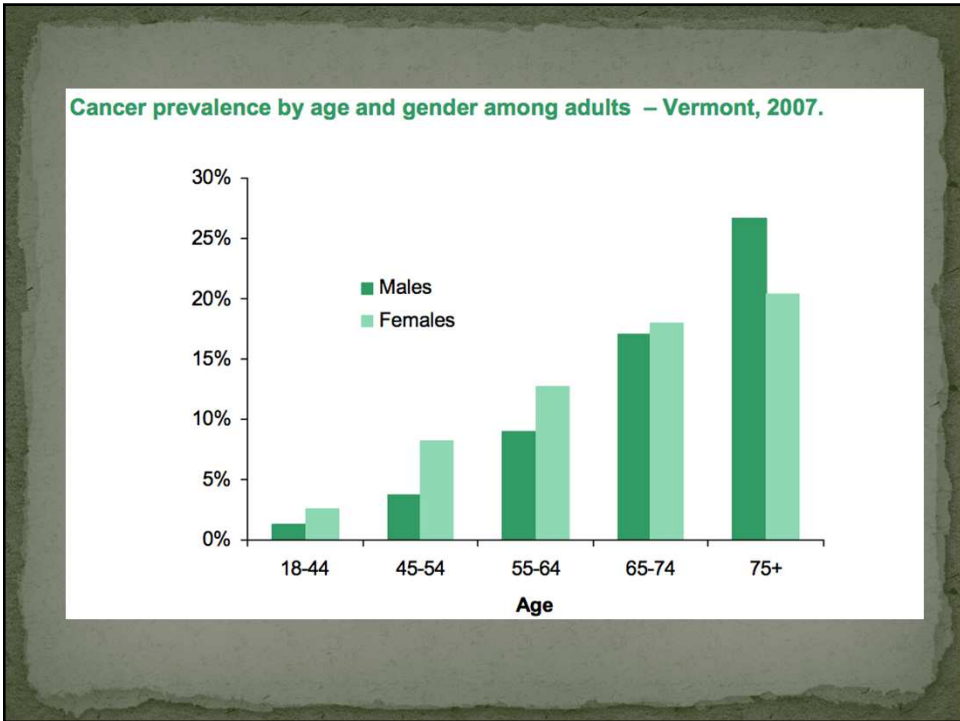
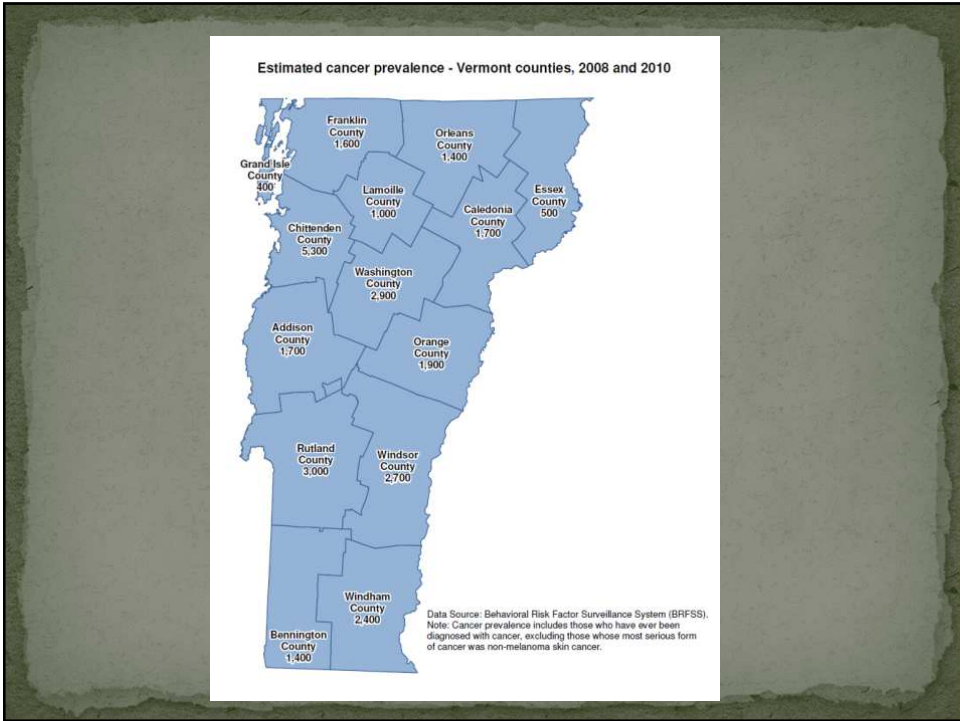
MORTALITY

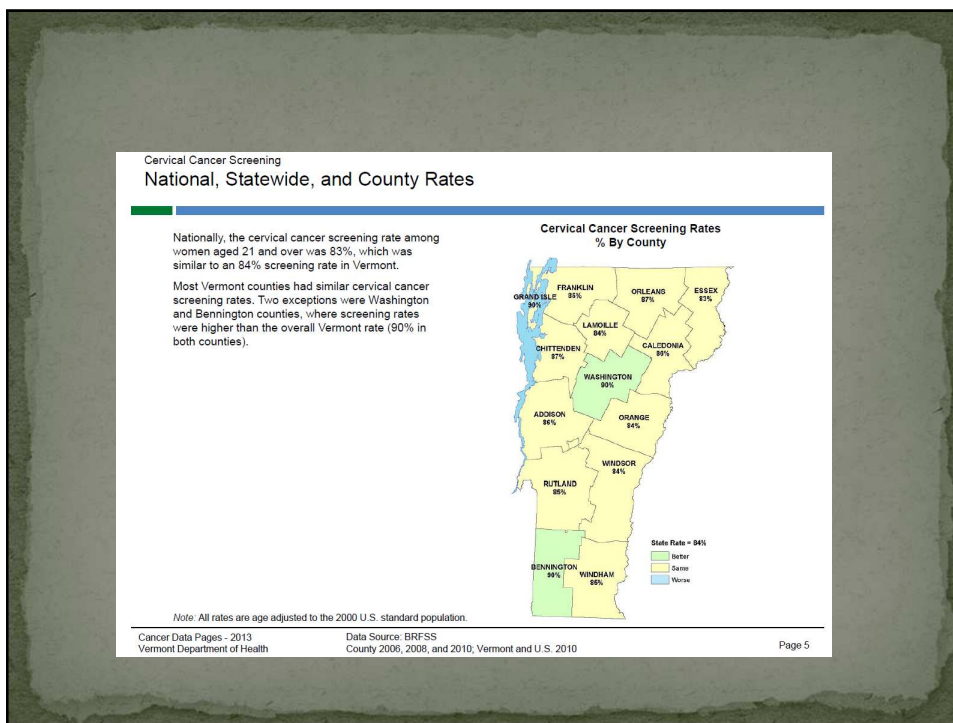
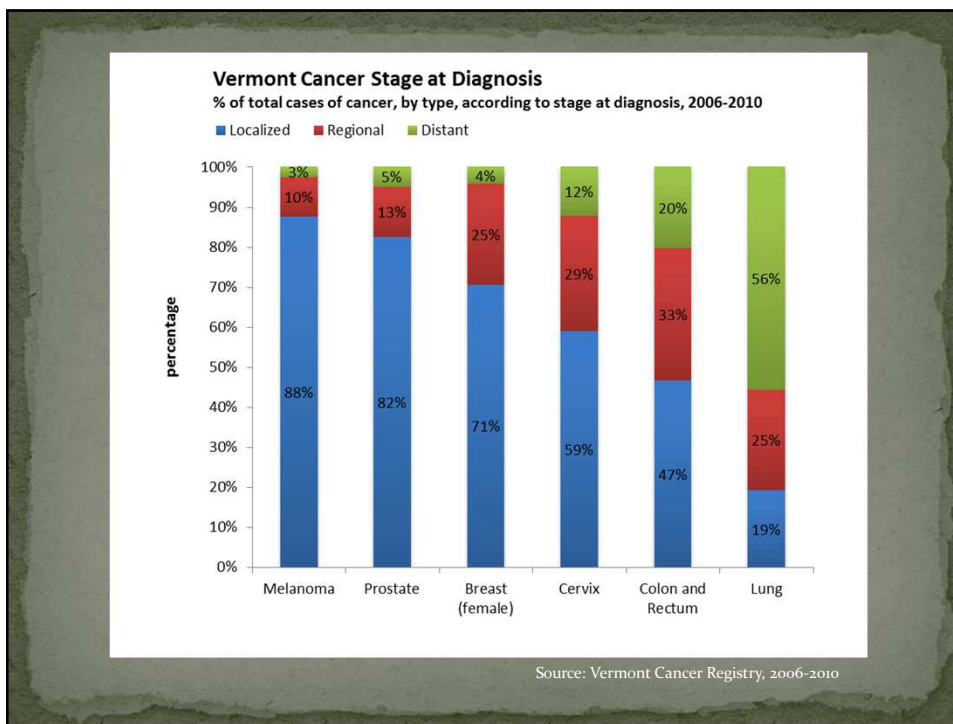


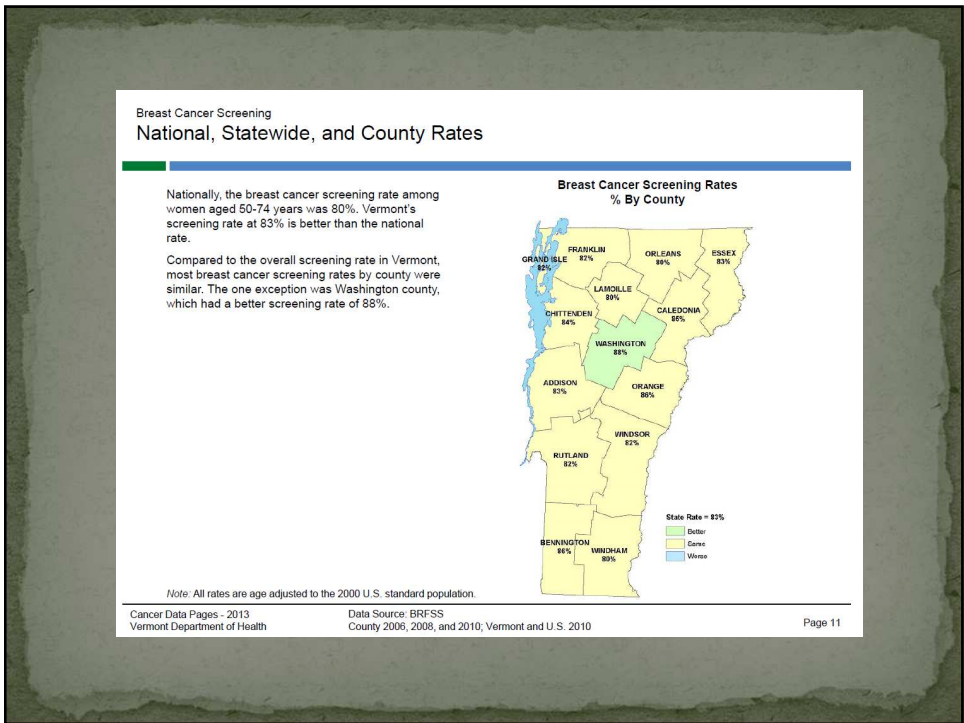
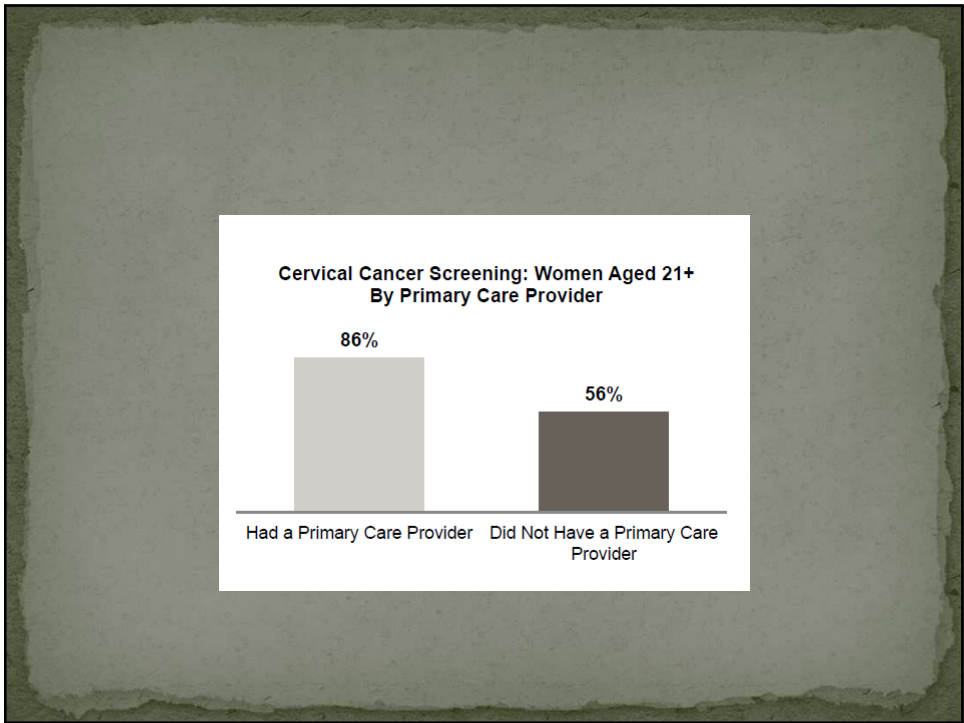
Age Adjusted Cancer Mortality Rates, 2006-2010 per 100,000 population by site and gender

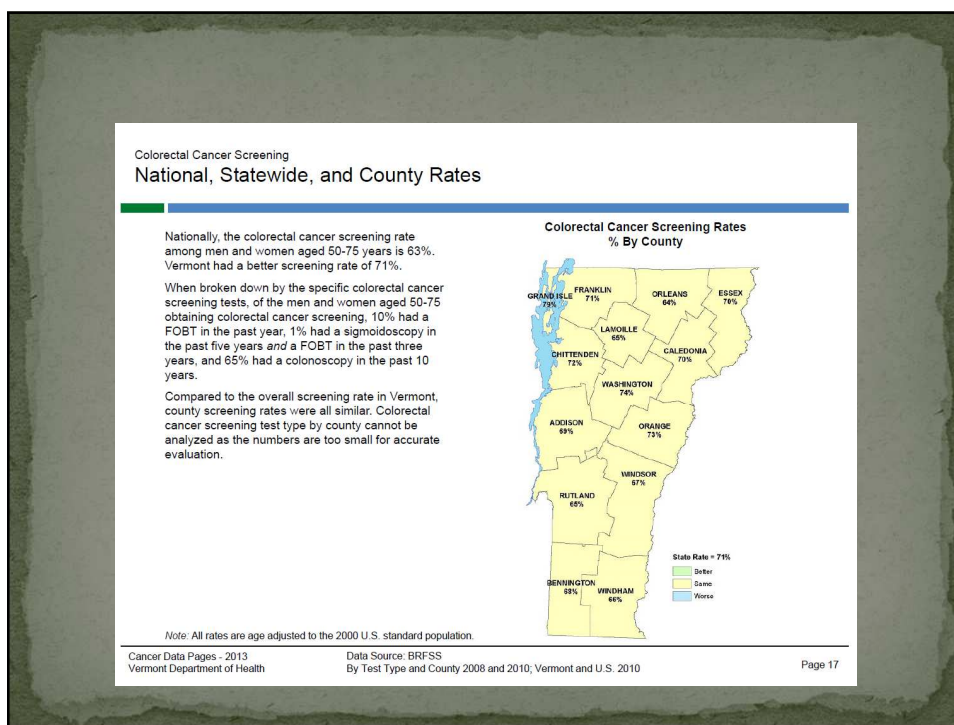
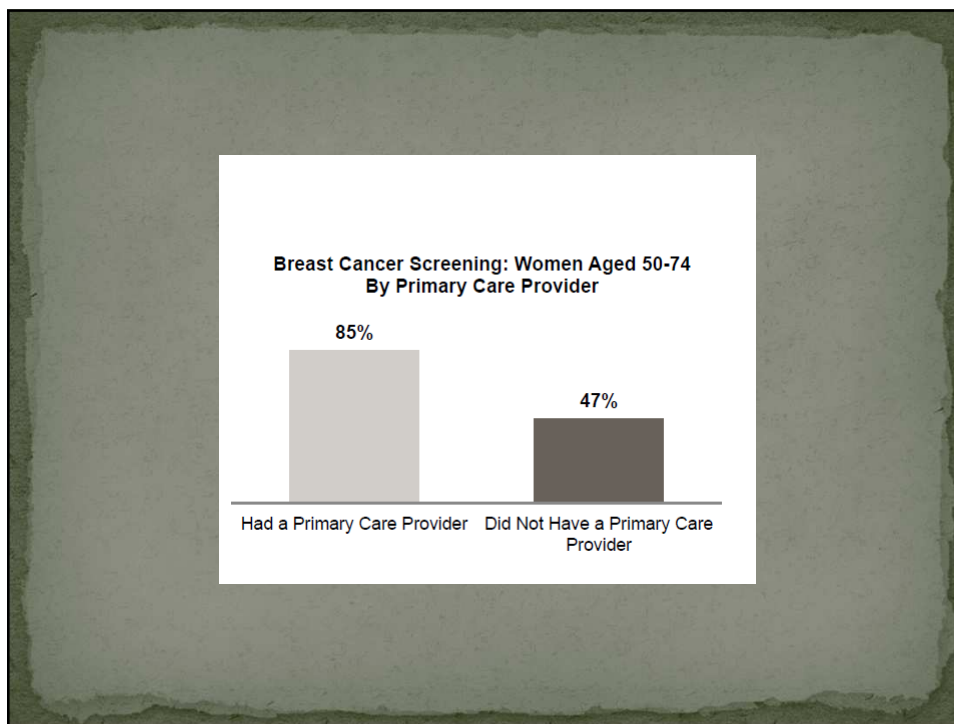
Male and Female				Male				Female			
Cancer Site	U.S. Rate (All Races)	VT Rate (All Races)	VT Deaths (per year)	Cancer Site	U.S. Rate (All Races)	VT Rate (All Races)	VT Deaths (per year)	Cancer Site	U.S. Rate (All Races)	VT Rate (All Races)	VT Deaths (per year)
All Sites	176.4	177.7	1,295	All Sites	215.3	211.8	666	All Sites	149.7	154.1	628
Lung and Bronchus	49.5	52.5 ▲	382	Lung and Bronchus	63.5	62.3	200	Lung and Bronchus	39.2	45.2 ▲	182
Colon and Rectum	16.4	15.9	116	Prostate	23.0	22.1	61	Breast	22.6	20.2 ▼	83
Pancreas	10.9	10.8	80	Colon and Rectum	19.6	17.4	54	Colon and Rectum	13.9	14.7	62
Leukemia	7.1	7.1	49	Pancreas	12.5	12.4	42	Pancreas	9.6	9.3	38
Non-Hodgkin Lymphoma	6.4	6.2	46	Leukemia	9.5	10.4	31	Ovary	8.1	7.4	30
Urinary Bladder	4.4	5.6 ▲	41	Urinary Bladder	7.7	9.7 ▲	29	Non-Hodgkin Lymphoma	5.1	5.0	21
Liver	5.6	5.1	37	Liver	7.6	8.3	27	Leukemia	5.3	4.6	18
Esophagus	4.3	4.7	35	Non-Hodgkin Lymphoma	8.2	7.8	24	Uterus	4.3	4.5	18
Brain/Nervous System	4.3	4.7	34	Kidney	8.3	7.3	25	Brain/Nervous System	3.5	4.2	16
Kidney	4.0	3.7	27	Kidney	5.8	5.2	17	Liver	3.4	3.3	13
Melanoma of the Skin	2.7	3.3	24	Brain/Nervous System	5.2	5.2	18	Urinary Bladder	2.2	2.7	12
Myeloma	3.4	3.1	22	Melanoma of the Skin	4.1	5.0	16	Myeloma	2.7	2.7	11
Oral Cavity/Throat	2.5	2.7	21	Oral Cavity/Throat	3.8	4.2	14	Kidney	2.6	2.5	10
Stomach	3.5	2.3 ▼	16	Myeloma	4.3	3.5	11	Melanoma of the Skin	1.7	2.1	8
Larynx	1.1	0.9	7	Stomach	4.9	3.2 ▼	10	Esophagus	1.6	1.9	8
Thyroid	0.5	0.7	5	Larynx	2.0	1.5	5	Stomach	2.5	1.6 ▼	6
Hodgkin Lymphoma	0.4	0.7 ▲	5	Hodgkin Lymphoma	0.5	0.9	2	Oral Cavity/Throat	1.4	1.5	7
				Thyroid	0.5	0.4	1	Cervix	2.4	1.2 ▼	5
				Testis	0.2	--	--	Thyroid	0.5	1.0 ▲	4
								Hodgkin Lymphoma	0.3	0.7	2
								Larynx	0.4	0.4	1

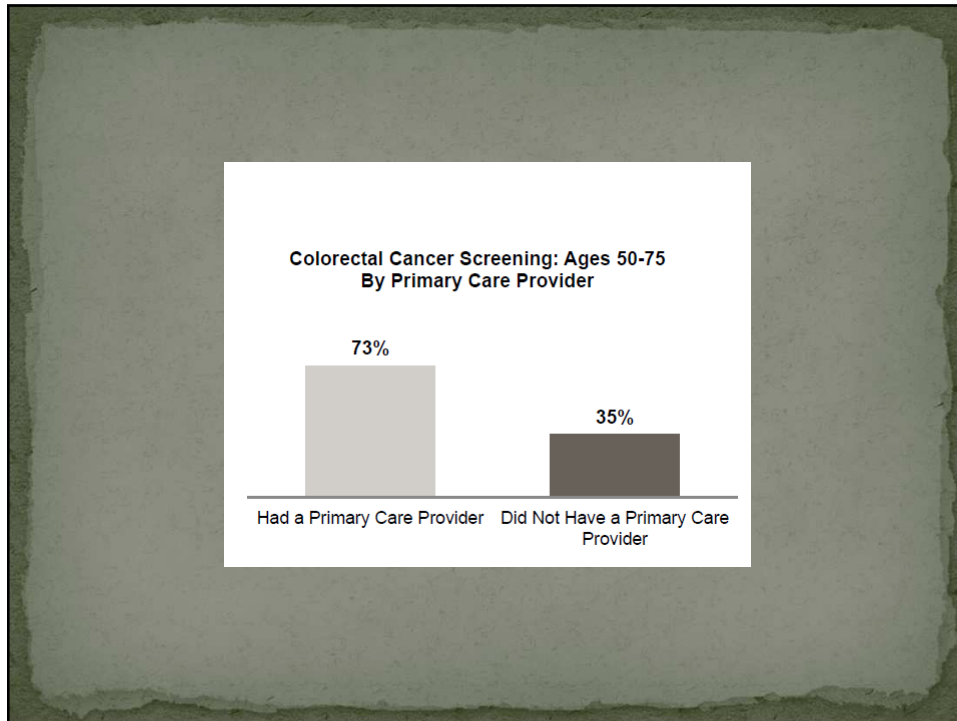
▲ Statistically higher than the U.S. rate.
▼ Statistically lower than the U.S. rate.











VERMONT STATE CANCER PLAN

- 5 year plans
- We are in our second 5 year plan.
- We have a
 - Steering Committee,
 - Working Committees
 - Task forces
- Review our progress
- Plan for the future